



# MAYK

OFFICIAL PUBLICATION OF INOCENCIO MAGTOTO MEMORIAL FOUNDATION, INC. DECEMBER 2004

## DOING MORE WHILE DOING WELL

The accomplishments of Inocencio Magtoto Memorial Foundation, Inc. (IMMFI) for the year 2004 can very well be summarized by "Doing more while doing well." IMMFI's program targets from 2002-2004 include a) increase in the number of children served, b) improvement in the nature and quality of services rendered to the children, c) geographical expansion outside the City of San Fernando, and d) involvement of more stakeholders and partners

### a. Increase in the number of children served:

In three years, IMMFI registered a 59% increase in the number of children, from 357 in 2001 to 569 in 2004.

### b. Expansion in geographical coverage:

Based in the City of San Fernando, IMMFI's delivery of services used to be focused in the city. In 2001, 250 out of 357 children (70%) came from the city. To provide equal opportunities to children from other towns, IMMFI targeted the nearby municipalities. By 2004, 56.2% of the registered children, or 320 out of the 569 came from the different towns outside the City of San Fernando.

### c. Improvement in the nature and quality of services:

Aside from providing additional direct services like occupational therapy, psychological evaluation and pre-vocational skills training, IMMFI also facilitated the acquisition of transportation discount ID card of 80 children. Community based services were also provided. Pre-vocational skills, promotion of Capampangan culture and child's rights were integrated in the SPED classes.

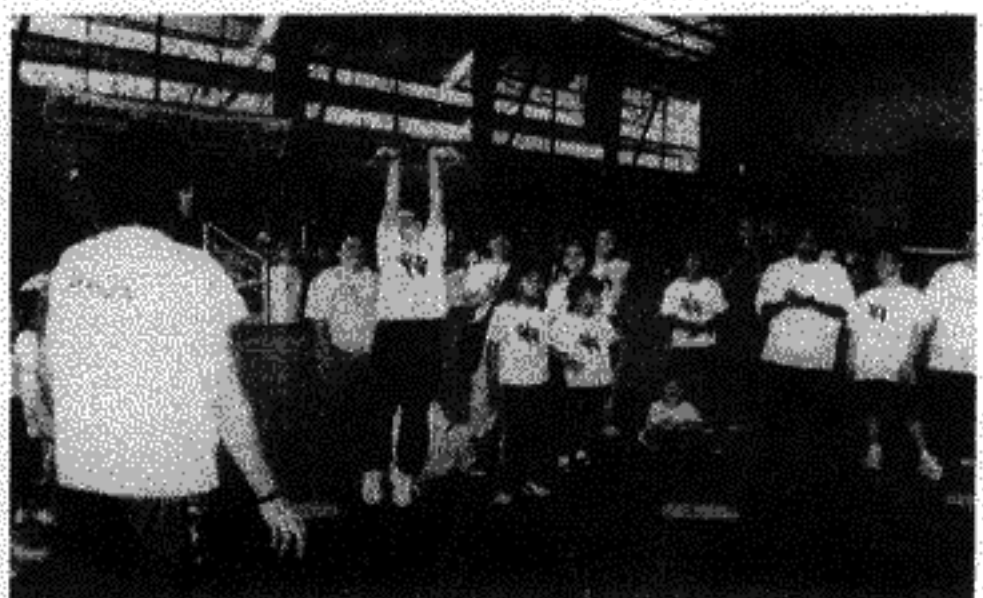


*The inclusion of pre-vocational skills development in the special education classes provided an opportunity for self expression*

### d. Involvement of more stakeholders and partners:

Responding to the needs of children with disabilities and their families requires a multidisciplinary and multisectoral approach. Since some services are not available locally, resources outside the province need to

be tapped. This is the basis of the need for more involvement of stakeholders and partners.



*The children enjoying the Special Olympics sponsored by college students from the University of the Assumption*

At the end of 2004, IMMFI has generated the participation of more partners and networks. It became a member of the Association of Foundations and a partner of Philippine Band of Mercy. It also helped facilitate the formation of regional clusters of Liliame Foundation and Philippine Misereor Partnership. More hospitals, medical professionals, parish volunteers and local government officials were involved. Students from both public and private schools conducted exchange visits and outreach activities with the children. Gradually, the level of community participation grew higher and better.



*St. Scholastica's Academy students integrating with the children*

## Support Service Program Highlights

IMMFI considers childhood disability as a child's rights issue and a development agenda. Every one, regardless of age, gender, economic status, political and religious persuasion, is vulnerable to some forms of disability. All the more so when it comes to children.

Providing educational, medical and other basic services to children with disabilities is therefore a community concern. Primarily involved in doing so should be the child (if in a capacity to do so) and the members of the family especially the parents.

IMMFI's efforts in **organizing and/or strengthening support groups for children with disabilities** included:

a. A Workshop on Alternative Educational Program for Normal People Who Happened to be Slow conducted by international educators Fr. Adam Gudalefsky, ICM and Sr. Concepcion Madduma, MM.



*Volunteers from St. James Parish during a field trip in Manila.*

b. Basic Sign Language Classes for parents, siblings, seminarians and public elementary school teachers

c. Basic Orientation Seminars on Childhood Disability for parents, care givers and rehab volunteers

d. Parents' conferences and family education on the nature and management of the child's disability

e. Seminar on the Use of Indigenous Materials in Special Education

f. The launching of **ABE KAMI**, a support group for children and youth with disabilities in Pampanga.



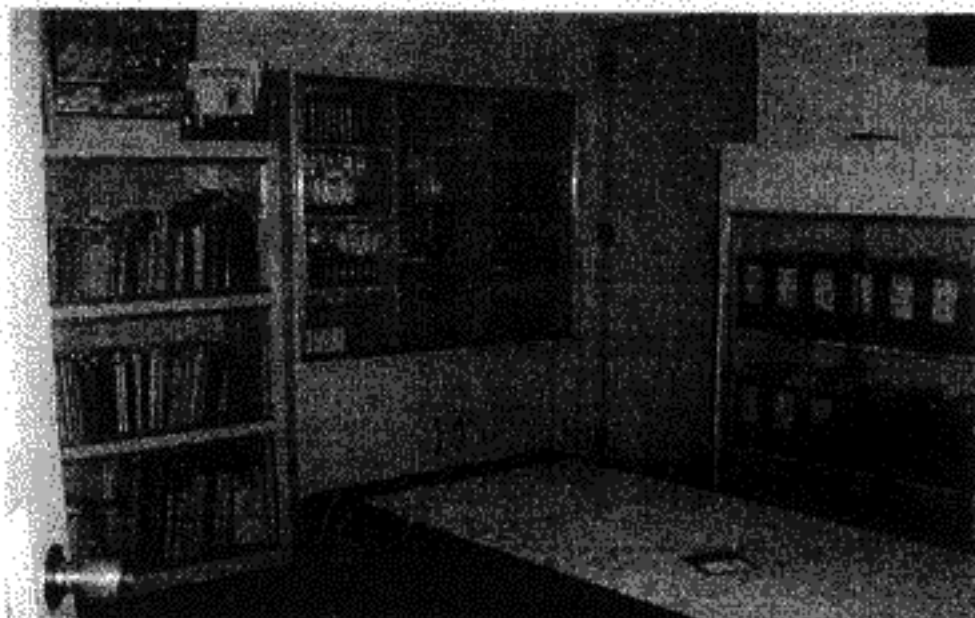
*Japanese guests with IMMFI officers/staff, children and parents*

**Advocacy and networking** are needed to heighten community awareness on the issues of disability prevention, detection, intervention, rehabilitation and integration in the mainstream of Philippine society. Advocacy work was done through photo exhibits, puppet shows, fora and dissemination of information materials.



*Volunteer doctors conducting rehabilitation assessment*

The various needs of children with disabilities cannot be answered solely by IMMFI. At the same time, some civic organizations, local government units, church based programs and kindhearted individuals are just waiting to be involved. While maintaining collaborative efforts with current networks, IMMFI established **new networks** for the growing number of children waiting to be served. To name some of them are Better Hearing Philippines, SFELAPCO, VSA Arts ng Pilipinas, National Commission for Culture and Arts, Phil. Band of Mercy, SACOP and the LGU of Guagua. Volunteers for special education, psychological evaluation and physical therapy of children also increased. Some parents played the roles of shadow teachers inside the classrooms.



*A collection of library materials on children, health and disability.*

For effective and relevant advocacy work, a system of **documentation and management of IMMFI data** was established. Each child has a regularly updated individual file containing personal, medical, school and other records. A listing of library materials makes the needed information accessible. Audio-visual aids and other instructional materials on children, health and disability issues are also made available for community education. **May K**, IMMFI's official publication, helped disseminate the different programs and services of IMMFI for children with disabilities in the province.

**Statement of Receipts and Expenses  
 For the Period Ended December 31, 2004**

<b>Gross Receipts:</b>			
Donations	626,838.28		
Program Users	14,706.00		
Grant	631,144.15		
Interest Income	<u>2,016.23</u>	P	1,274,704.66
<b>Less Program Cost:</b>			
Special Education	372,404.37		
Medical and Allied Assist.	210,665.16		
Socio-cultural Dev't. Activities	8,632.58		
Networking and Advocacy	144,295.90		
Research, Docu and Publication	76,398.72		
Support Group Building	<u>15,788.75</u>	P	828,185.48
<b>Net Receipts After Program Cost</b>		P	446,519.18
<b>Less Administrative and Operating Expenses</b>			
Office Salaries	156,000.00		
Employees' Benefits	17,500.00		
Representation	15,737.01		
Office Supplies	15,677.37		
Personnel Development	15,283.15		
Contribution to SSS, PH, HMDF	13,724.40		
Repairs and Maintenance	11,858.55		
Utilities	8,459.80		
Postage and Communication	6,396.90		
Insurance	6,391.98		
Double Throw Installation Cost	3,760.00		
Taxes and Licenses	3,236.00		
Consultation Cost	3,000.00		
Depreciation Expense – Equipments	2,475.00		
Transportation	1,963.00		
Bank Charge	100.00		
Miscellaneous	<u>11,016.71</u>	P	292,579.87
<b>Net Receipts After Program Cost and Admin Expenses</b>		P	<u>153,939.31</u>

**Balance Sheet  
 As of December 31, 2004**

<b>ASSETS</b>			
<b>Current Assets:</b>			
Cash		414,657.26	
Prepaid Insurance		<u>2,130.66</u>	P 416,787.92
<b>Non-Current:</b>			
Equipment	4,975.00		
Accumulated Depreciation	<u>2,475.00</u>	2,500.00	
Building (nominal value)		<u>1.00</u>	<u>2,501.00</u>
<b>TOTAL ASSETS</b>			P 419,288.92
<b>LIABILITIES</b>			
Accounts Payable	2,751.58		
Withholding Tax Payable	2,634.41		
SLF Funds	<u>992.69</u>	6,378.68	
<b>IMMFI EQUITY</b>		<u>412,910.24</u>	
<b>TOTAL LIABILITIES AND IMMFI EQUITY</b>			P 419,288.92